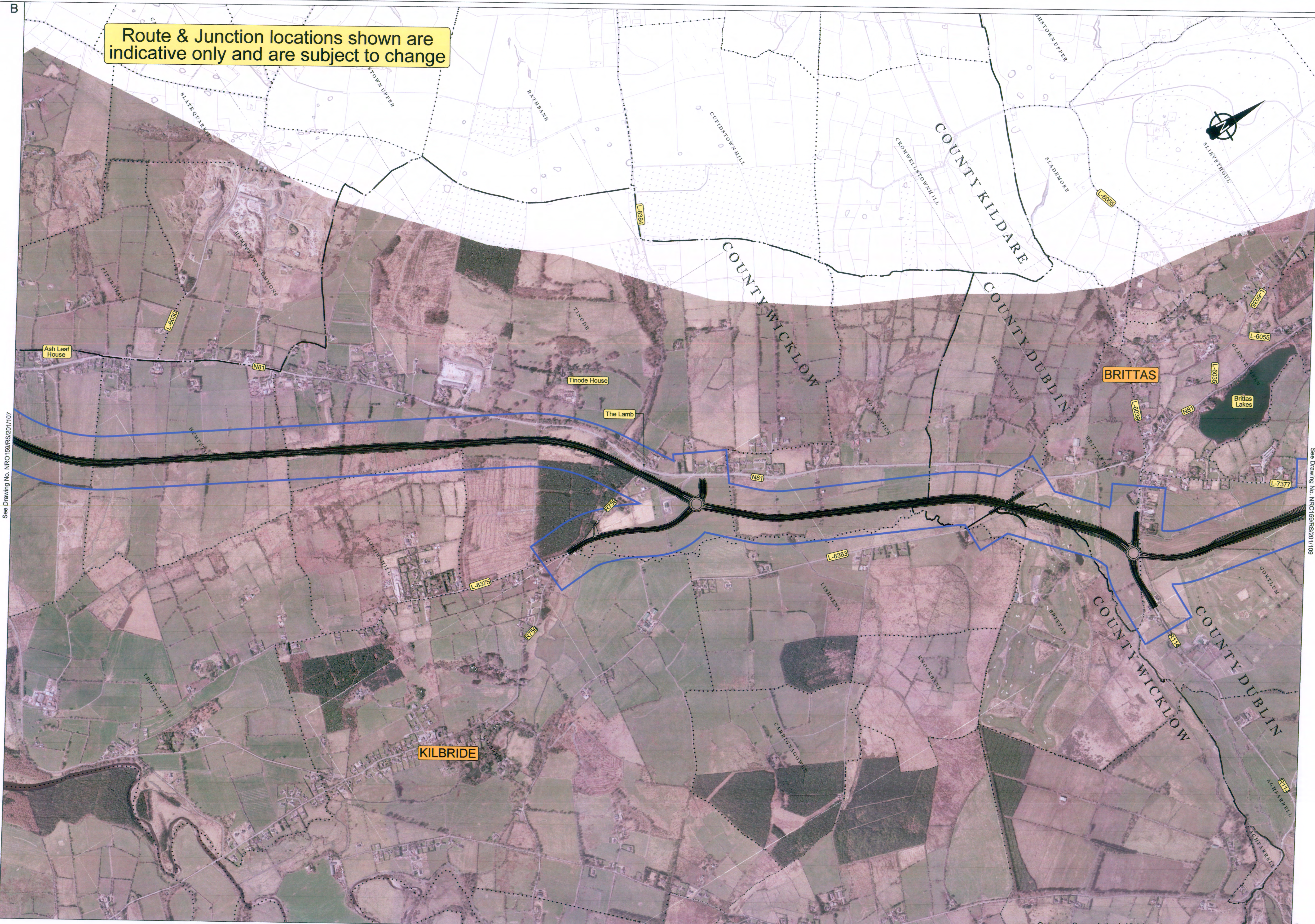


Route & Junction locations shown are indicative only and are subject to change



See Drawing No. NRO159/RS/201/107

See Drawing No. NRO159/RS/201/109

Plan

Legend:

Preferred Route Corridor

**Kildare County Council**  
  
 National Roads Design Office  
 Mauldin, Naas, Co. Kildare, Ireland  
 Tel: +353-45-898199, Fax: +353-45-875845, e-mail: kcc@kildarendo.com

**MICHAEL O' LEARY**  
 ACTING DIRECTOR OF SERVICES  
 Transportation & Public Safety

**DAVID O' GRADY BE MSc HDip CEng MIEI**  
 ACTING SENIOR ENGINEER

1	Feb. '12	Initial Issue
Suffix / Initials	Date	Description

REVISIONS

STAGE
<input type="checkbox"/> PRELIMINARY
<input type="checkbox"/> N.R.A. APPROVAL
<input type="checkbox"/> TENDER
<input type="checkbox"/> CONTRACT

PROJECT **N81 Hollywood Cross to Tallaght Road Improvement Scheme**

DRAWING **Public Consultation Preferred Route Corridor** | SHEET **3 - 4**

Filename: N:\Projects\WRO159\Drawing\200RS\201 Dwg. No. NRO159/RS/201/108

Scale: 1:10,000 @ A1  
 Date: Feb. '2012  
 Drawn by: B.K.  
 Checked: A.K.  
 Revision

Ordnance Survey Ireland. All rights reserved. Licence number EN0045206